



NAVOIY VILOYATI
STATISTIKA BOSHQARMASI



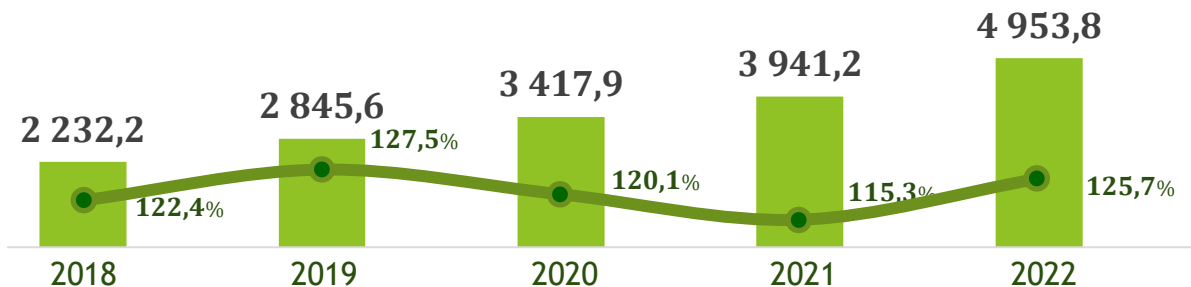
NOMINAL HISOBLANGAN O'RTACHA OYLIK ISH HAQI

*qishloq xo'jaligi va kichik tadbirkorlik
subyektlarisiz, dastlabki ma'lumotlar*

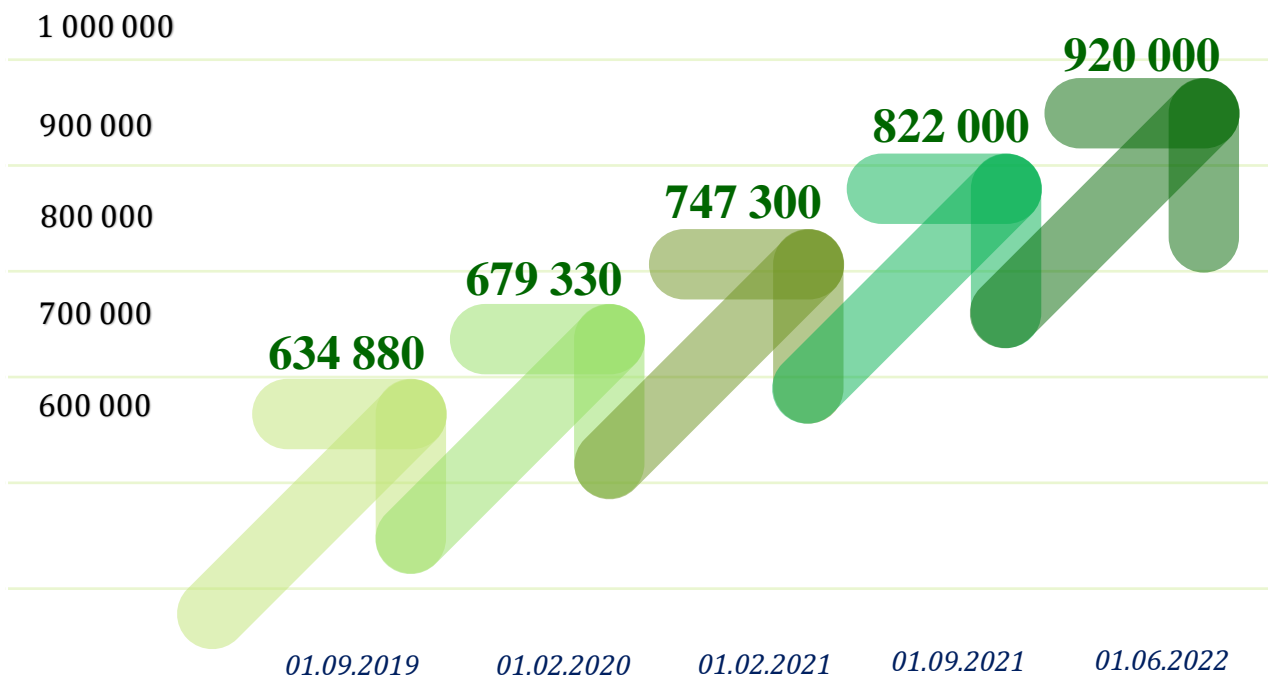
2022 - yil yanvar-sentabr

O'rtacha oylik ish haqining yillar kesimidagi dinamikasi

yanvar-sentyabr, o'sish darajasi o'tgan yilning mos davriga nisbatan, ming so'm



Mehnatga haq to'lashning eng kam miqdori dinamikasi, so'mda



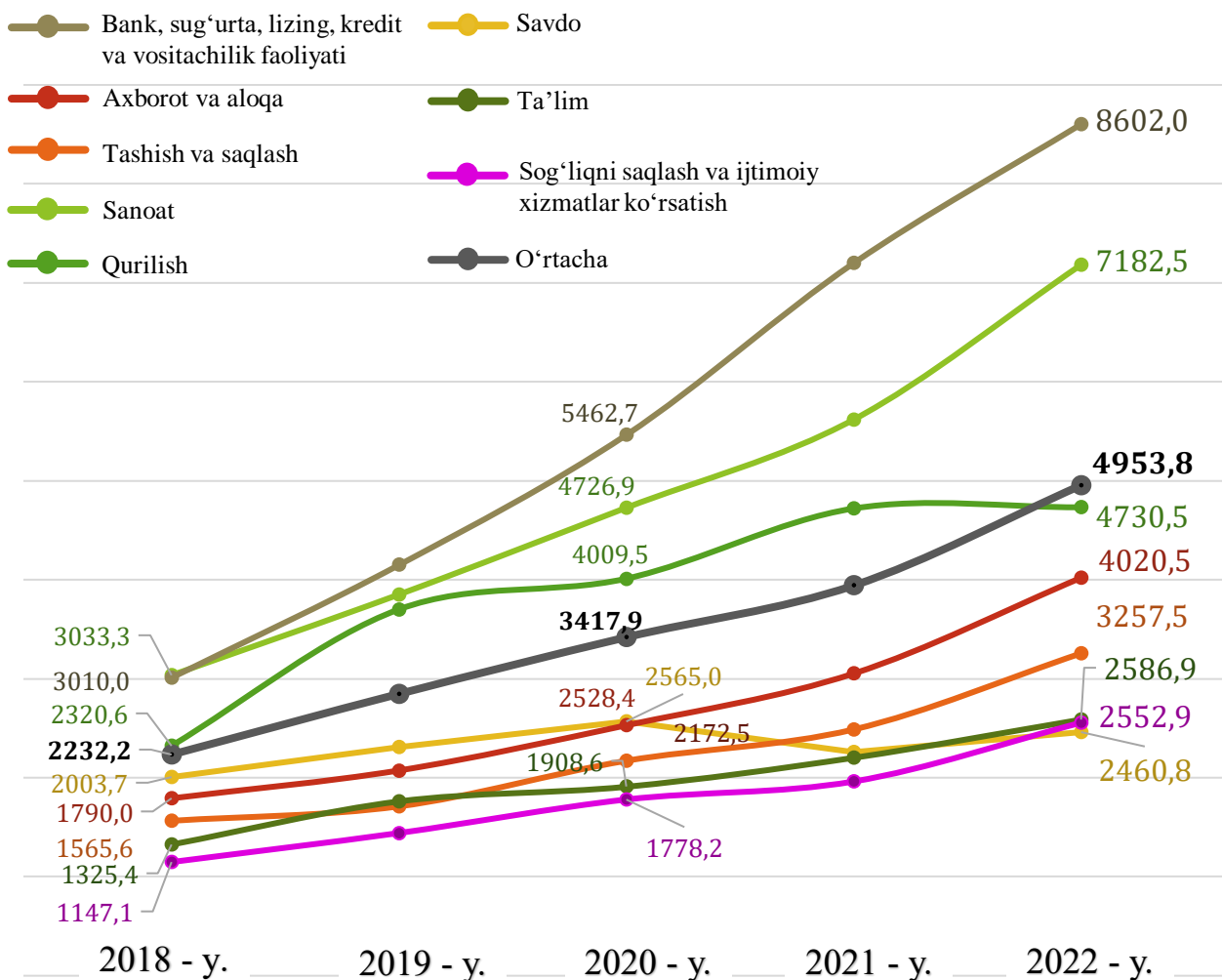
Ma'lumot uchun: Mehnatga haq to'lashning eng kam miqдорiga 2022 - yil 1 - iyundan o'zgartirish kiritildi hamda **920,0 ming so'mga** yetkazildi.

2022 - yil yanvar-dekabr oylari uchun o'rtacha oylik ish haqi ko'rsatkichini shakllantirishda qishloq xo'jaligi va kichik tadbirkorlik subyektlari **hisobga olinmagan**, chunki fermer xo'jaliklari hamda kichik tadbirkorlik subyektlari **yilda bir marta** hisobot taqdim etishi belgilangan.

Yuridik shaxs maqomiga ega bo'lgan korxonalar va tashkilotlarda ishlovchi xodimlarning o'rtacha oylik nominal hisoblangan ish haqlari (keyingi o'rinlarda – o'rtacha oylik ish haqi) har bir iqtisodiy faoliyat turlarida turlicha farqlanadi.

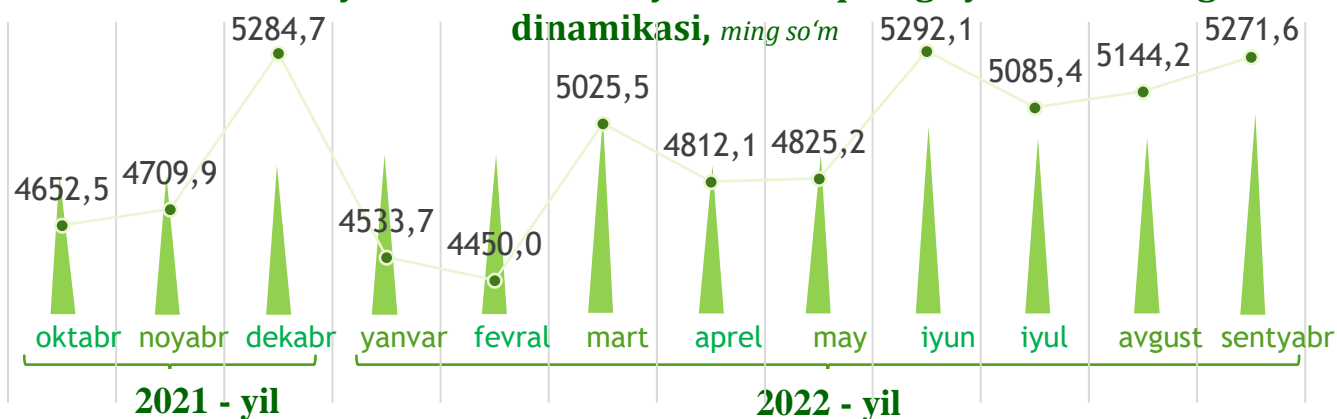
O'rtacha oylik nominal hisoblangan ish haqi tarkibiga qo'shimcha to'lovlar, mukofot pullari, rag'batlantiruvchi to'lovlar, kompensatsiya va ishlamagan vaqti uchun to'lovlar, shuningdek, jismoniy shaxslardan olinadigan daromad solig'i va kasaba uyushmasiga ajratmalar kiradi.

O'rtacha oylik ish haqining tarmoqlar bo'yicha o'zgarish dinamikasi, yanvar-iyun, ming so'm

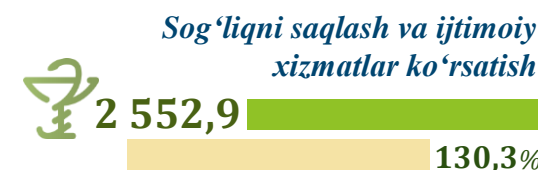
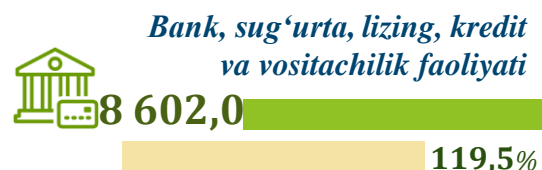
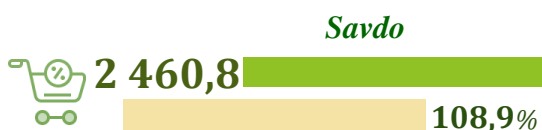


2021-2022 - yillarda o'rtacha oylik ish haqining oylar kesimidagi

dinamikasi, ming so'm



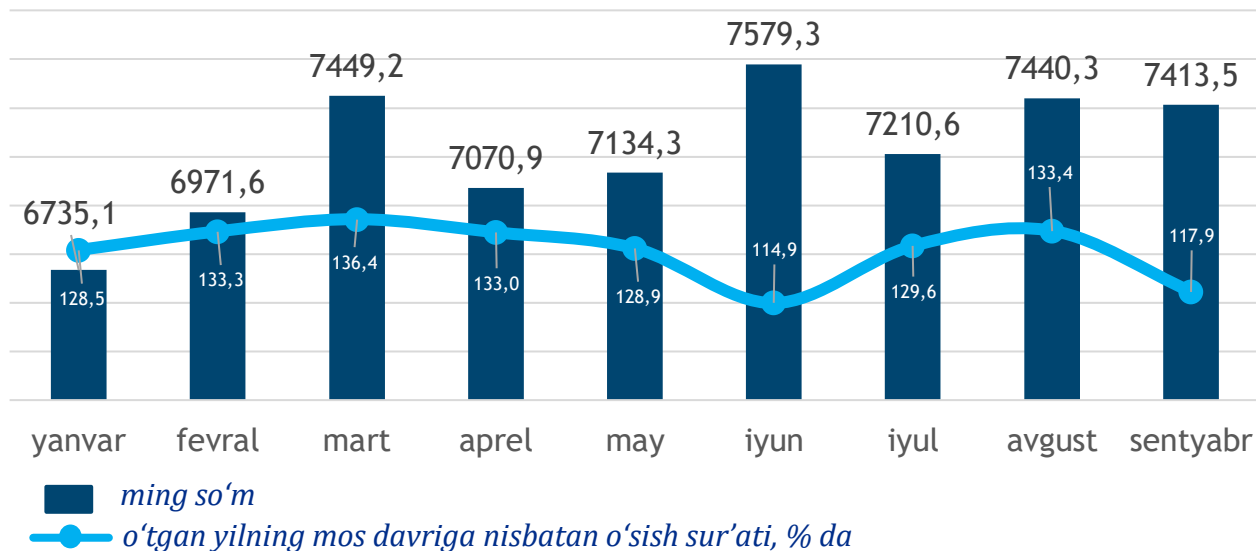
Iqtisodiy faoliyat turlari kesimida o'rtacha oylik ish haqi, ming so'm



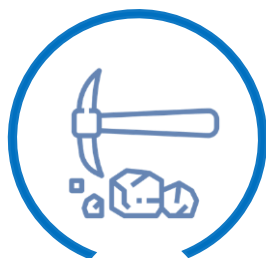
2022 - yil yanvar-sentyabr oylarida iqtisodiy faoliyat turlari bo'yicha o'rtacha oylik ish haqining eng baland ko'rsatkichi – axborot va aloqa sohasiga to'g'ri kelib, o'tgan yilning mos davriga nisbatan o'sish darajasi **131,7 %** ni tashkil etdi.

Shuningdek, tashish va saqlash sohasi **130,9 %**, sog'liqni saqlash va ijtimoiy xizmatlar ko'rsatish sohasi **130,3 %**, sanoat sohasi **127,8 %**, Bank, sug'urta, lizing, kredit va vositachilik faoliyati **119,5 %**, ta'lim sohasida **117,5 %**, savdo sohasi **108,9 %** hamda qurilish sohasi **100,3 %** ga o'sganligini ko'rishimiz mumkin.

SANOAT SOHASIDA O‘RTACHA OYLIK ISH HAQI



Sanoatning asosiy tarmoqlari bo‘yicha o‘rtacha oylik ish haqi, ming so‘m



7 302,8

Tog‘-kon sanoati va
ochiq konlarni ishlash



7 405,5

Ishlab chiqarish
sanoati



2 269,9

Suv bilan ta‘minlash,
kanalizatsiya tizimi,
chiqindilarni yig‘ish
va utilizatsiya qilish

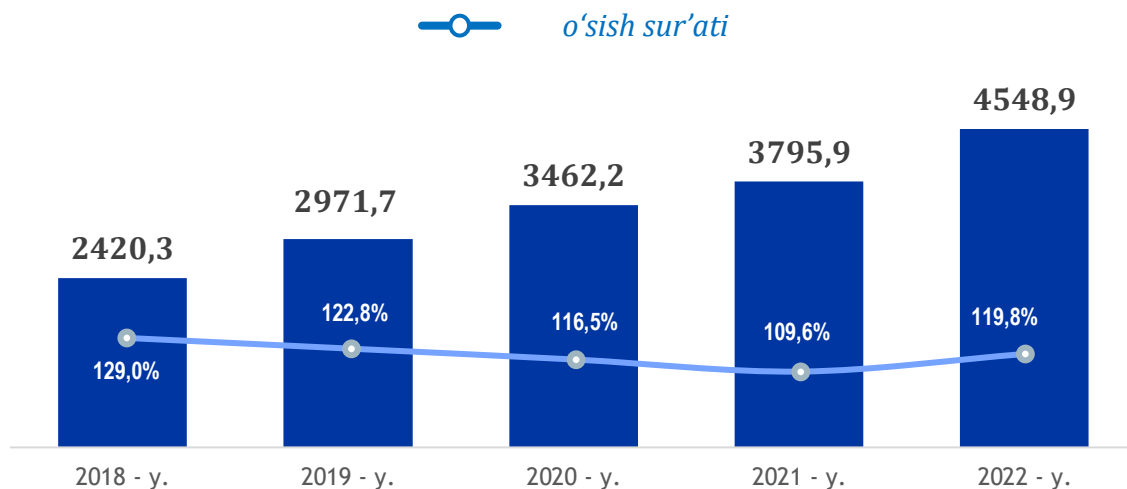


5 535,0

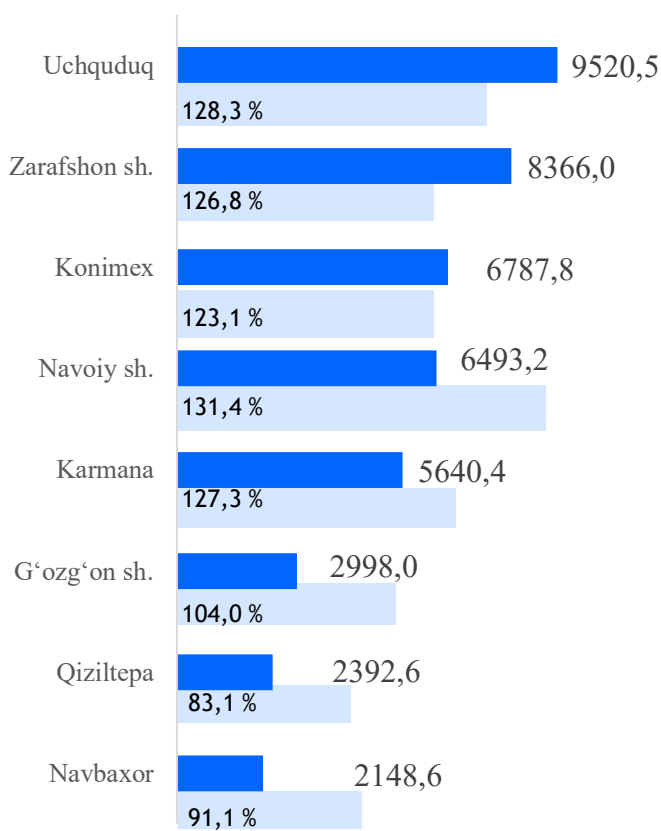
Elektr, gaz, bug‘
bilan ta‘minlash va
havoni konditsiyalash

Sanoatning asosiy tarmoqlari bo‘yicha o‘rtacha oylik ish haqining eng yuqori ko‘rsatkichi tog‘-kon sanoati va ochiq konlarni ishlash tarmog‘i (**7 302,8 ming so‘m**), ishlab chiqarish sanoati (**7 405,5 ming so‘m**) hamda elektr, gaz, bug‘ bilan ta‘minlash va havoni konditsiyalash (**5 535,0 ming so‘m**) da kuzatildi.

O'rtacha oylik ish haqining yillar kesimidagi dinamikasi, *ming so'm*



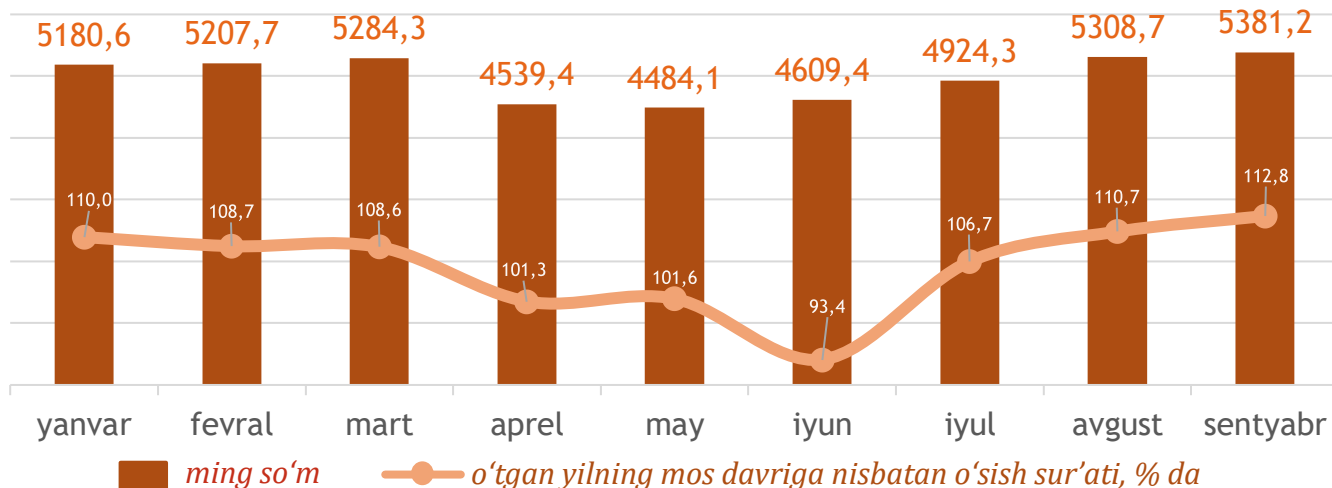
Hududlar kesimida



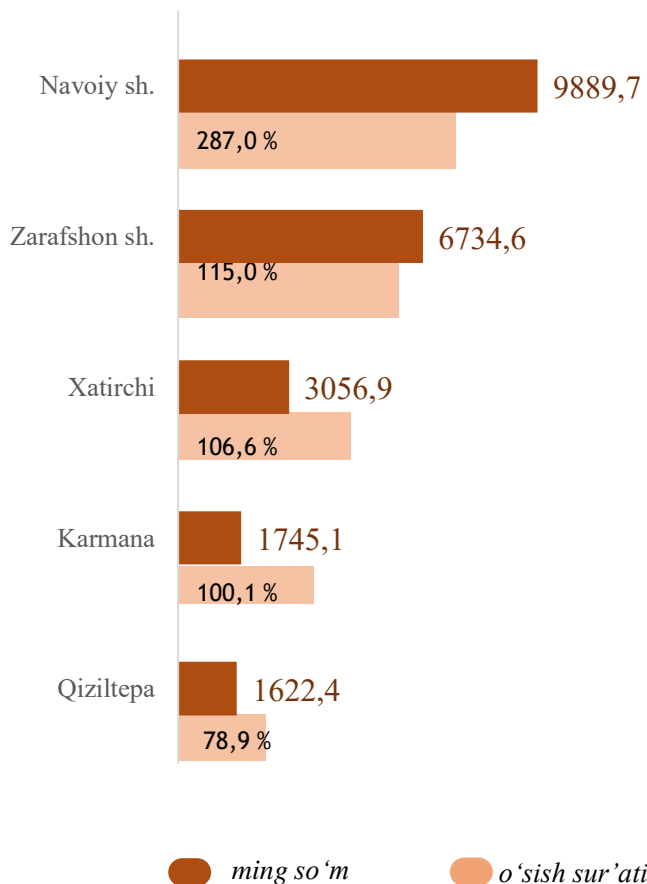
Sanoat iqtisodiy faoliyat turi bo'yicha o'rtacha oylik ish haqining eng yuqori ko'rsatkichi Uchquduq tumani (**9520,5 ming so'm**), Zarafshon shahri (**8366,0 ming so'm**), Konimex tumani (**6787,8 ming so'm**), Navoiy shahri (**6493,2 ming so'm**) hamda Karmana tumanida (**5640,4 ming so'm**) kuzatildi.

● *ming so'm* ● *o'sish sur'ati*

QURILISH SOHASIDA O'RTACHA OYLIK ISH HAQI

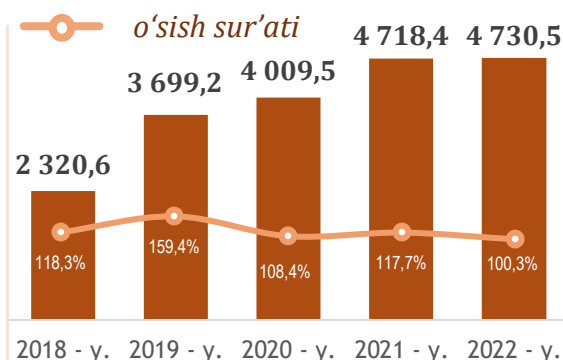


Hududlar kesimida

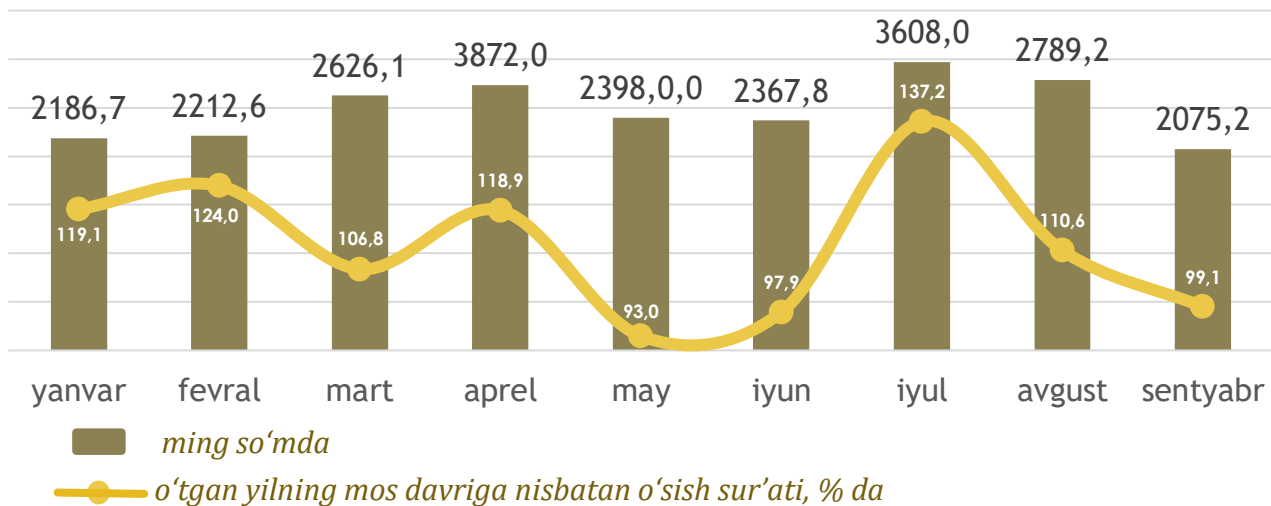


Qurilish faoliyat turi bo'yicha o'rtacha oylik ish haqining eng yuqori ko'rsatkichi Navoiy shahri (**9889,7 ming so'm**), Zarafshon shahri (**6734,6 ming so'm**), Xatirchi tumani (**3056,9 ming so'm**)da qayd etildi.

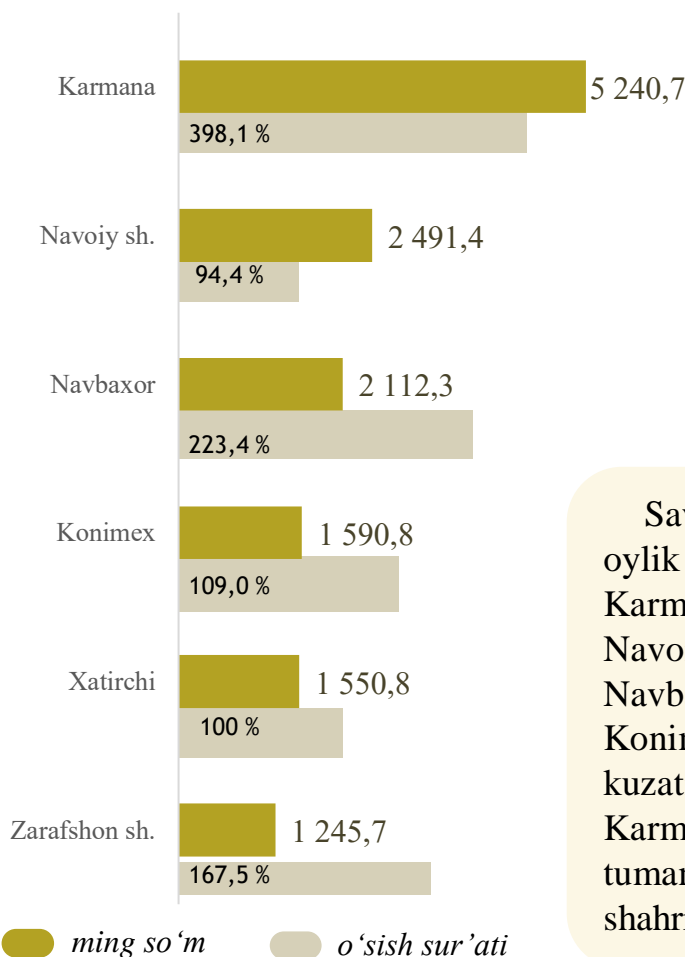
O'rtacha oylik ish haqining yillar kesimidagi dinamikasi, ming so'm



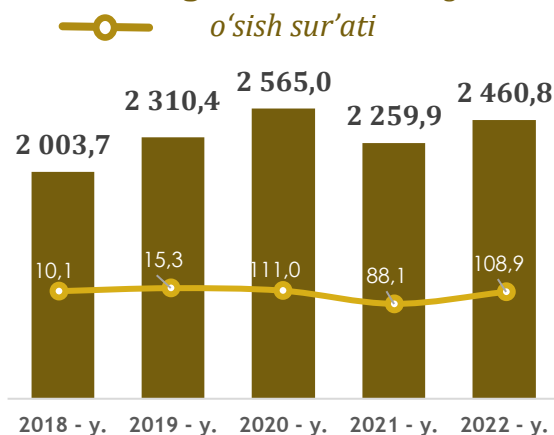
SAVDO SOHASIDA O'RTACHA OYLIK ISH HAQI



Hududlar kesimida

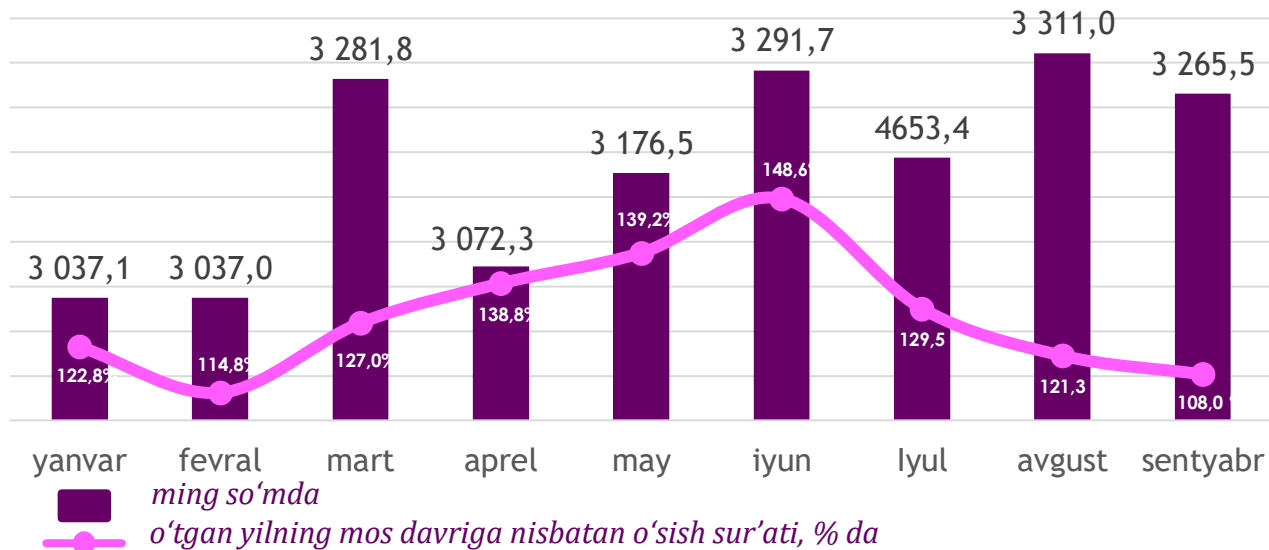


O'rtacha oylik ish haqining yillar kesimidagi dinamikasi, ming so'm

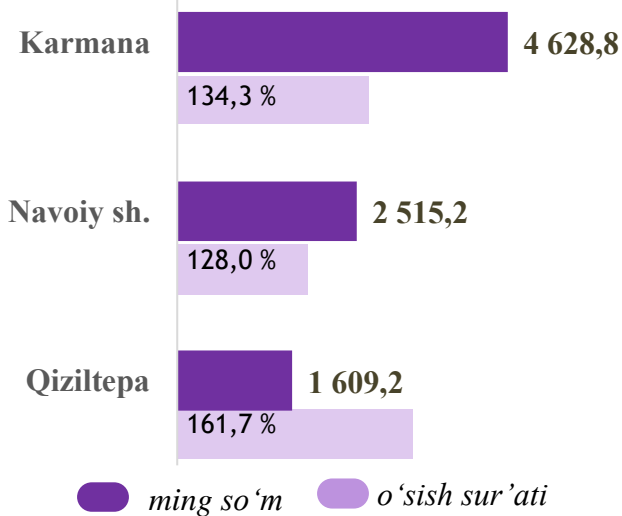


Savdo faoliyat turi bo'yicha o'rtacha oylik ish haqining eng yuqori ko'rsatkichi Karmana tumani (**5240,7 ming so'm**), Navoiy shahri (**2491,4 ming so'm**), Navbahor tumani (**2112,3 ming so'm**), Konimex tumanida (**1590,8 ming so'm**) kuzatildi. Shuningdek, yuqori o'sish sur'ati Karmana tumani (**398,1 %**), Navbahor tumani (**223,4 %**) hamda Zarafshon shahrida (**167,5 %**) qayd etildi.

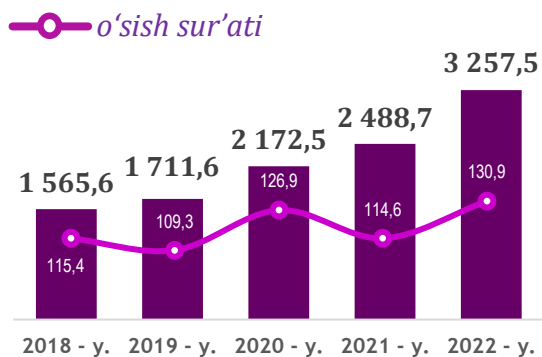
TASHISH VA SAQLASH SOHASIDA O'RTACHA OYLIK ISH HAQI



Hududlar kesimida

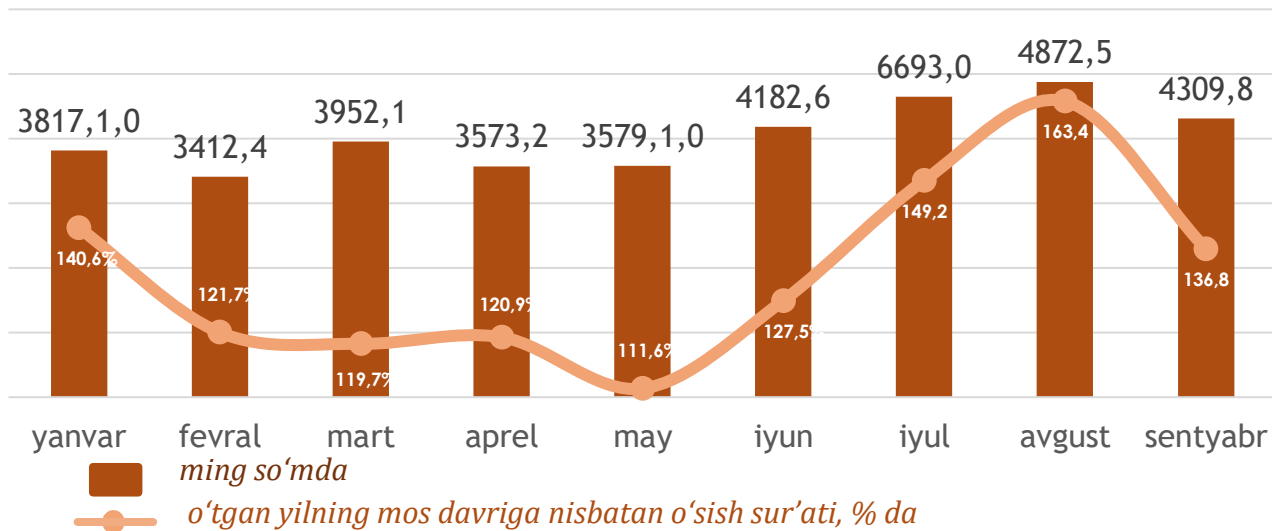


O'rtacha oylik ish haqining yillar kesimidagi dinamikasi, ming so'm

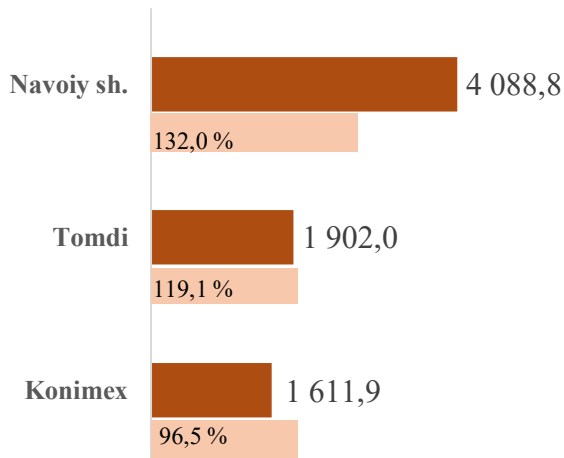


Tashish va saqlash iqtisodiy faoliyat turi bo'yicha o'rtacha oylik ish haqining eng yuqori ko'rsatkichi Karmana tumani (**4628,8 ming so'm**), Navoiy shahri (**2515,2 ming so'm**) hamda Qiziltepa tumani (**1609,2 ming so'm**)da kuzatildi. Shuningdek, yuqori o'sish sur'ati Qiziltepa tumanida (**161,7 %**), Karmana tumanida (**134,3 %**) va Navoiy shahrida (**128,0 %**) qayd etildi.

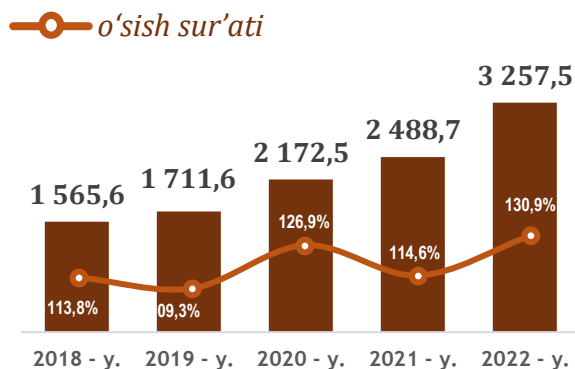
AXBOROT VA ALOQA SOHASIDA O‘RTACHA OYLIK ISH HAQI



Hududlar kesimida



O‘rtacha oylik ish haqining yillar kesimidagi dinamikasi, ming so‘m

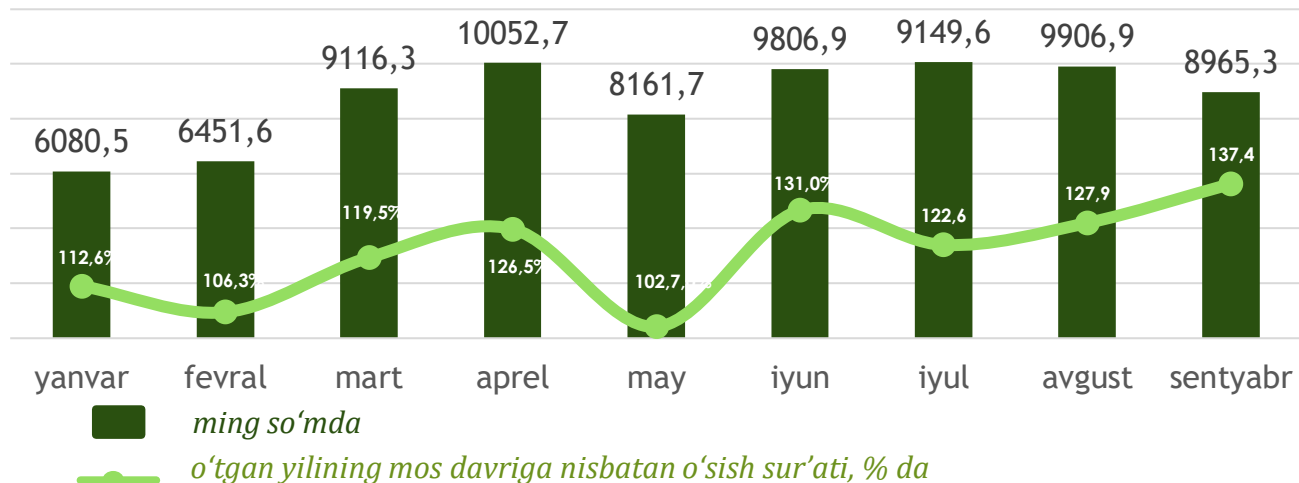


■ ming so‘m ● o‘shish sur‘ati

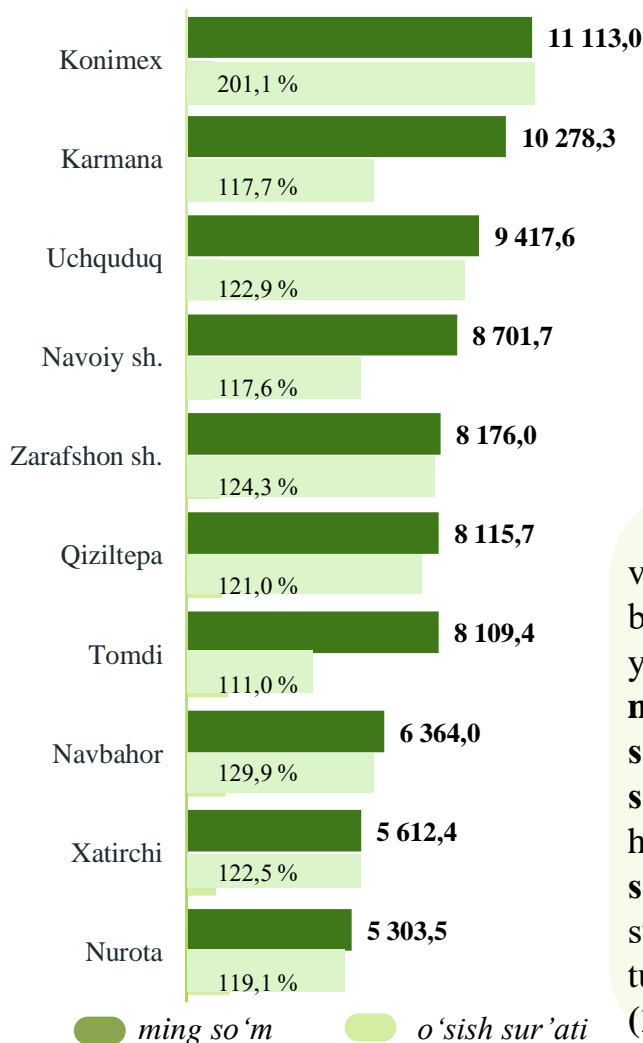


Axborot va aloqa faoliyat turi bo‘yicha o‘rtacha oylik ish haqining eng yuqori ko‘rsatkichi Navoiy shahri (**4088,8 ming so‘m**), Tomdi tumani (**1902,0 ming so‘m**) hamda Konimex tumani (**1611,9 ming so‘m**)da kuzatildi. Shuningdek, yuqori o‘shish sur‘ati Navoiy shahri (**132,0 %**) hamda Tomdi tumani (**119,1 %**)da qayd etildi.

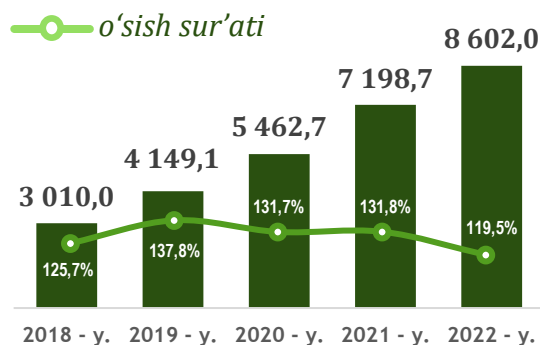
BANK, SUG'URTA, LIZING, KREDIT VA VOSITACHILIK SOHASIDA O'RTACHA OYLIK ISH HAQI



Hududlar kesimida

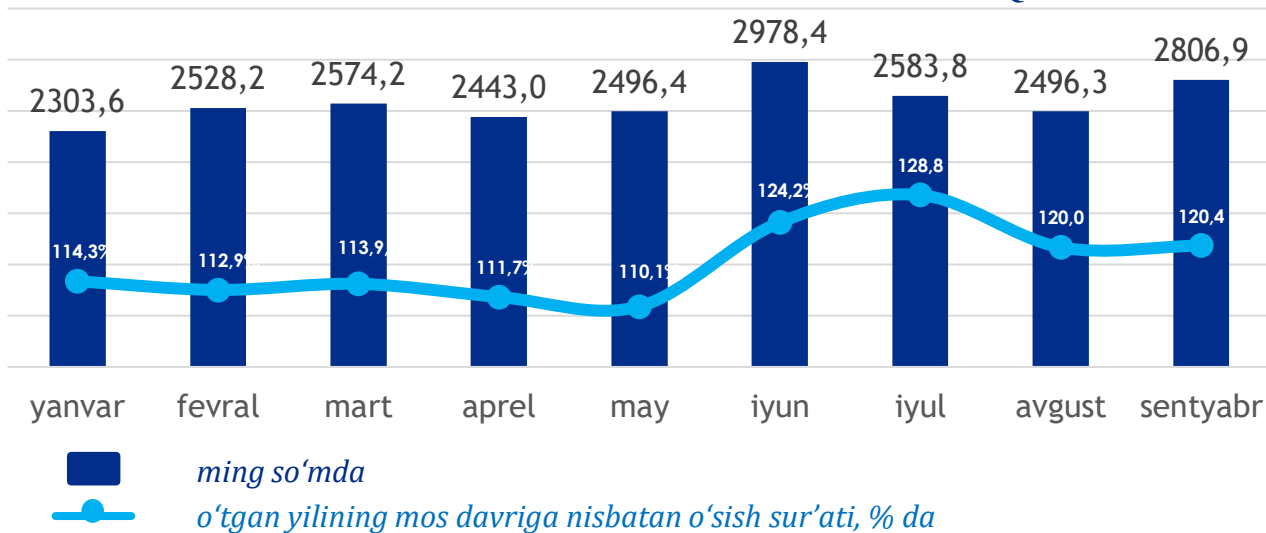


O'rtacha oylik ish haqining yillar kesimidagi dinamikasi, ming so'm

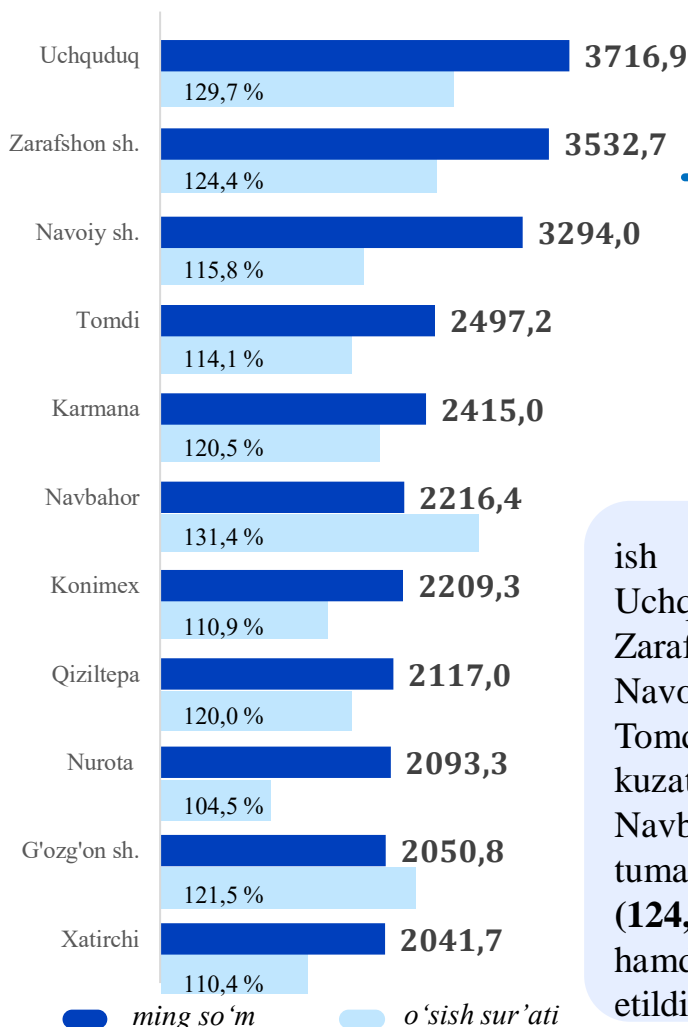


Bank, sug'urta, lizing, kredit va vositachilik faoliyati iqtisodiy faoliyat turi bo'yicha o'rtacha oylik ish haqining eng yuqori ko'rsatkichi Konimex tumani (**11113,0 ming so'm**), Karmana tumani (**10278,3 ming so'm**), Uchquduq tumani (**9417,6 ming so'm**), Navoiy shahri (**8701,7 ming so'm**) hamda Zarafshon shaharlari (**8176,0 ming so'm**)da kuzatildi. Shuningdek, yuqori o'sish sur'ati Konimex tumani (**201,1 %**), Xatirchi tumani (**122,5 %**) hamda Uchquduq tumanida (**122,9 %**) qayd etildi.

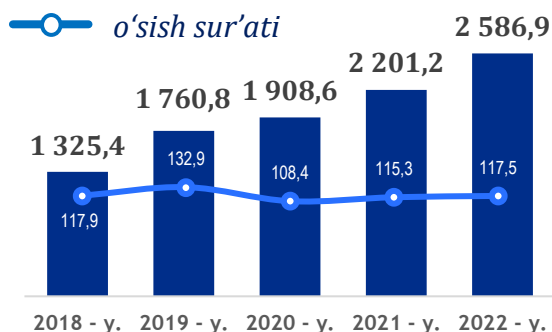
TA'LIM SOHASIDA O'RTACHA OYLIK ISH HAQI



Hududlar kesimida

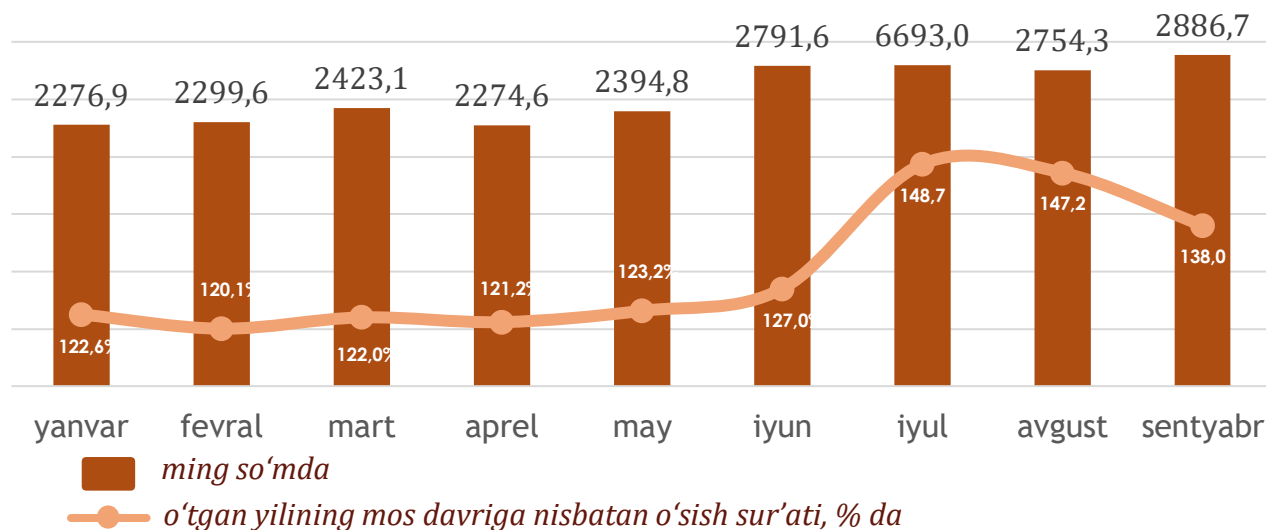


O'rtacha oylik ish haqining yillar kesimidagi dinamikasi, ming so'm

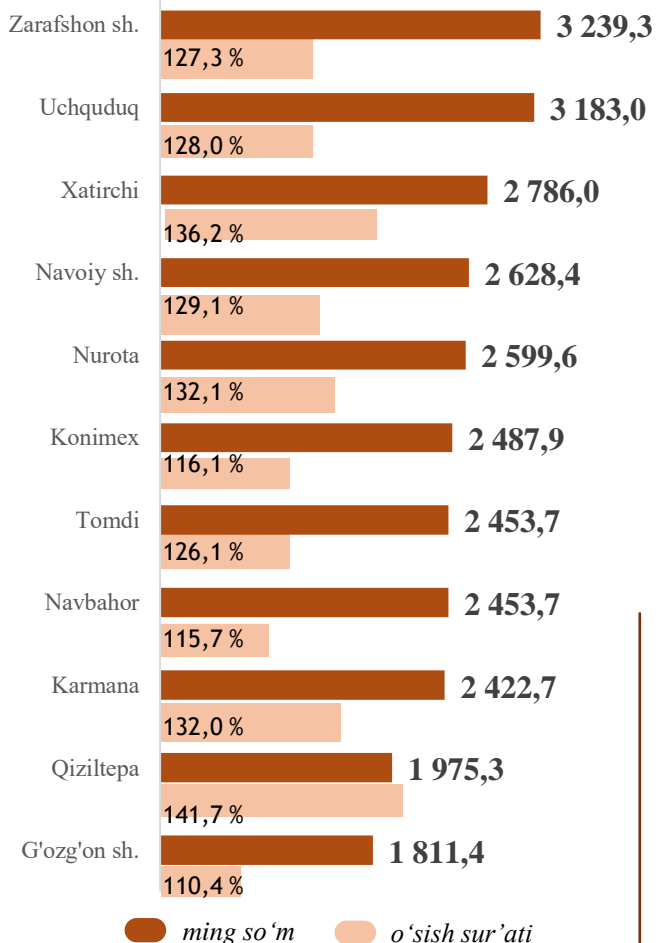


Ta'lim sohasi bo'yicha o'rtacha oylik ish haqining eng yuqori ko'rsatkichi Uchquduq tumani (**3716,9 ming so'm**), Zarafshon shahri (**3532,7 ming so'm**), Navoiy shahri (**3294,0 ming so'm**), hamda Tomdi tumanlari (**2497,2 ming so'm**)da kuzatildi. Shuningdek, yuqori o'sish sur'ati Navbahor tumanida (**131,4 %**), Uchquduq tumani (**129,7 %**), Zarafshon shahri (**124,4 %**), G'ozg'on shahri (**121,5 %**) hamda Karmana tumanlarida (**120,5 %**) qayd etildi.

SOG'LIQNI SAQLASH VA IJTIMOIIY XIZMATLAR KO'RSATISH SOHASIDA O'RTACHA OYLIK ISH HAQI

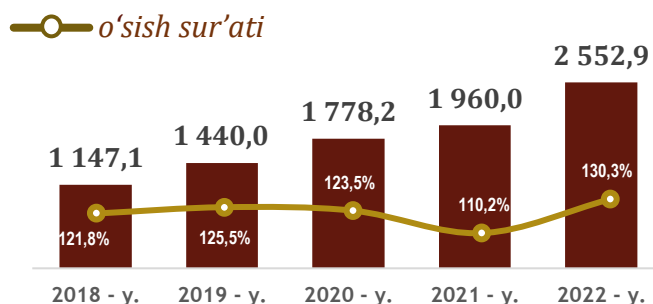


Hududlar kesimida



Sog'liqni saqlash va ijtimoiy xizmatlar ko'rsatish sohasining faoliyati turi bo'yicha o'rtacha oylik ish haqining eng yuqori ko'rsatkichi Zarafshon shahri (3239,3 ming so'm), Uchquduq tumani (3183,0 ming so'm), Xatirchi tumani (2786,0 ming so'm) hamda Navoiy shahri (2628,4 ming so'm)da kuzatildi. Shuningdek, yuqori o'sish sur'ati Qiziltepa tumani (141,7%), Xatirchi (136,2%) hamda Karmana tumanlarida (132,0%) qayd etildi.

O'rtacha oylik ish haqining yillar kesimidagi dinamikasi, ming so'm



DEMOGRAFIYA VA MEHNAT STATISTIKASI BO'LIMI

Nominal hisoblangan ish haqi – ma'lum bir davr (soat, oy, yil) mobaynida xodim tomonidan ishlab chiqarilgan mahsulot (bajarilgan ish yoki ko'rsatilgan xizmat) evaziga ish beruvchilar tomonidan, amaldagi qonun hujjatlariga asoslangan holda soliq va boshqa to'lovlarni o'z ichiga oluvchi yollanma xodimning mehnatiga haq to'lash tarzida jismoniy shaxsga pul shaklida hisoblangan daromadlardan iborat.



Tel.: 79 223-07-41